

Lilly Miller

# GRASSHOPPER, EARWIG, CUTWORM & SOWBUG BAIT

GRASSHOPPER, EARWIG, CUTWORM & SOWBUG BAIT may be broadcast in vegetable gardens, on lawns, and in ornamental plantings. It can protect plants from grasshoppers, earwigs, ants, cutworms, armyworms, crickets, darkling ground beetles, centipedes, millipedes and sowbugs.

#### DIRECTIONS FOR USE

It is a violation of Federal law to use this product in a manner inconsistent with its labeling. For household use only.

One cup of GRASSHOPPER, EARWIG, CUTWORM & SOWBUG BAIT equals approximately 3 ounces.

**VEGETABLES AND FRUIT**—To kill Armyworms, Crickets, Cutworms, Darkling Ground Beetles, Grasshoppers, Sowbugs, Earwigs, Ants, Centipedes and Millipedes. Broadcast lightly on soil surface around plants at the rate indicated for each crop. Do not allow bait to contact foliage or edible part of crops. Observe the number of days before harvest from last application as noted in parentheses following each crop.

Asparagus (1): Use 5 tsp per 25 sq. ft. Reapply as often as every 7 days when applications are to spears; apply as often as every 3 days when applications are to ferns. Make no more than 3 applications prior to harvest and 2 additional applications to ferns only.

Snap Beans (fresh), Peas (fresh) (all 3): Use 4 tsp per 25 sq. ft. Reapply as often as every 7 days. Make no more than 4 applications per year.

Beets (roots), Carrots, Radish, Parsnips, Rutabaga, Turnips (roots) (7): Use 5 tsp per 25 sq. ft. Reapply as often as every 7 days. Make no more than 3 applications per year.

Broccoli, Brussels Sprouts, Cabbage, Cauliflower, Kohlrabi (3): Use 5 tsp per 25 sq. ft. Reapply as often as every 7 days. Make no more than 3 applications per year.

Chinese Cabbage, Kale, Collards (14): Use 5 tsp per 25 sq. ft. Reapply as often as every 7 days. Make no more than 3 applications per year.

Sweet Corn (2): Use 5 tsp per 25 sq. ft. Reapply as often as every 3 days. Make no more than 8 applications per year.

Cucumber, Melon, Squash (3): Use 3 tsp per 25 sq. ft. Reapply as often as every 7 days. Make no more than 6 applications per year.

Lettuce (head and leaf), Endive, Celery, Dandelion, Parsley, Swiss Chard, Hanover Salad, Rhubarb, Beets (Tops), Turnip (Tops) (15): Use 5 tsp per 25 sq. ft. Reapply as often as every 7 days. Make no more than 3 applications per year.

Potatoes (7): Use 5 tsp per 25 sq. ft. Reapply as often as every 7

days. Make no more than 3 applications per year.

Strawberries (7): Use 5 tsp per 25 sq. ft. Reapply as often as every 7 days. Make no more than 5 applications per year.

Tomatoes, Peppers, Eggplant (3): Use 5 tsp per 25 sq. ft. Reapply as often as every 7 days. Make no more than 4 applications per year.

**LAWNS, FLOWERS, SHRUBS AND OTHER ORNAMENTALS**—To control armyworms, crickets, cutworms, darkling ground beetles, grasshoppers, sowbugs, earwigs, ants, centipedes and millipedes. Cutworms and earwigs are active at night and spend the daytime just below the soil surface, in cracks and crevices or underneath leaf litter and rocks. Sowbugs prefer damp areas.

For protection of ornamental plants: Apply GRASSHOPPER, EARWIG, CUTWORM & SOWBUG BAIT around ornamentals in shady, protected areas, at the base of walls and fences, and in 2 to 4 inch wide bands along the edge of walkways and patios. Use 2 to 4 oz. of GRASSHOPPER, EARWIG, CUTWORM & SOWBUG BAIT per 250 sq. ft. For best results be sure that area to be treated is damp.

For use on lawns: To control armyworms, crickets, cutworms, darkling ground beetles, grasshoppers, sowbugs, earwigs, ants, centipedes and millipedes. Mow lawn, remove clippings and thoroughly water. Apply GRASSHOPPER, EARWIG, CUTWORM & SOWBUG BAIT at the rate of 4 to 8 oz. per 500 sq. ft.

#### STORAGE AND DISPOSAL

Store this product in its original container and keep out of reach of children and domestic animals. If empty: Do not reuse this container. Place in trash or offer for recycling if available. If partly filled: Call your local solid waste agency or 1-800-CLEANUP for disposal instructions. Never place unused product down any indoor or outdoor drain.

Filled by weight not by volume. Product may settle after packaging.

**NOTICE:** Seller makes no warranty, expressed or implied, concerning the use of this product other than indicated on the label. Buyer assumes all risk of use and/or handling of this material when such use and/or handling is contrary to label instructions.

GRASSHOPPER, EARWIG, CUTWORM & SOWBUG BAIT



Lilly Miller

Lilly Miller is a registered trademark of Central Garden & Pet.

LILLY MILLER BRANDS  
1340 Treat Blvd., Suite 650  
Walnut Creek, CA 94597

EPA Reg. No. 802-493  
EPA Est. 35497-OR-1

www.lillymiller.com

08601062 - 06/06



Lilly Miller  
GRASSHOPPER, EARWIG, CUTWORM & SOWBUG BAIT

Not Affected  
By Rain

Covers up to  
4,000 sq. ft.

Lilly Miller

Lilly Miller

GRASSHOPPER, EARWIG, CUTWORM & SOWBUG BAIT

#### PRECAUTIONARY STATEMENTS HAZARDS TO HUMANS AND DOMESTIC ANIMALS

**CAUTION:** Harmful if swallowed or absorbed through the skin. Avoid contact with eyes, skin, or clothing. Wash hands thoroughly with soap and water after handling. Remove contaminated clothing and wash clothing before reuse.

#### FIRST AID

Have product container or label with you when calling a poison control center or doctor, or going for treatment.

**If swallowed:** Call a poison control center or doctor immediately for treatment advice. Do not induce vomiting unless told to do so by a poison control center or doctor. Do not give any liquid to a person. Do not give anything to an unconscious person.

**If in eyes:** Hold eye open and rinse slowly and gently with water for 15-20 minutes. Remove contact lenses, if present, after the first 5 minutes, then continue rinsing. Call a poison control center or doctor for treatment advice.

**If on skin:** Take off contaminated clothing. Rinse skin immediately with plenty of water for 15-20 minutes. Call a poison control center or doctor for treatment advice.

**If inhaled:** Move person to fresh air. If person is not breathing, call 911 or an ambulance, then give artificial respiration, preferably mouth-to-mouth if possible. Call a poison control center or doctor for further treatment advice.

**NOTE TO PHYSICIAN:** Contains N-methyl carbamate insecticide which is a cholinesterase inhibitor. Specific antidote consists of atropine. Narcotics and other sedatives should not be used. Drugs like 2-PAM (pyridine-2-aldoxime methiodide) are NOT recommended.

#### ENVIRONMENTAL HAZARDS

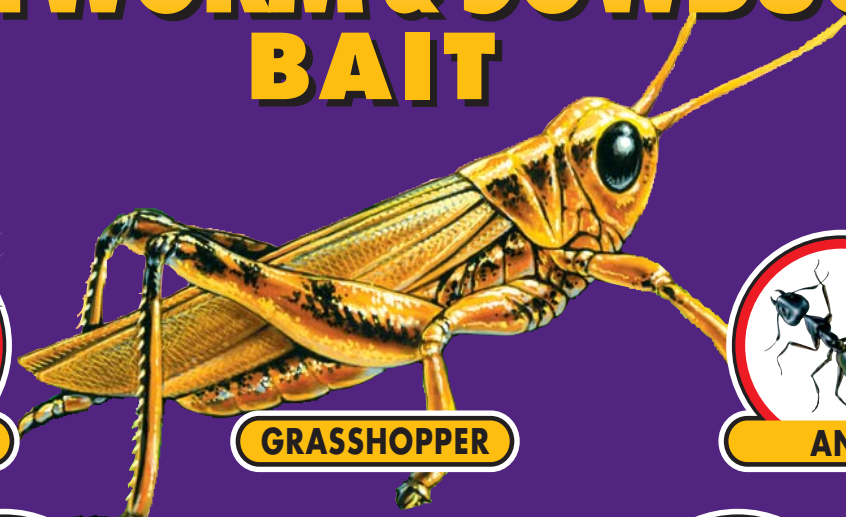
This pesticide is extremely toxic to aquatic and estuarine invertebrates. Do not apply directly to water. Do not contaminate water by cleaning of equipment or disposal of wastes.

This product is highly toxic to bees exposed to direct treatment or residues on blooming crops or weeds. Do not apply this product or allow it to drift to blooming crops or weeds if bees are visiting the treatment area.

# GRASSHOPPER, EARWIG, CUTWORM & SOWBUG BAIT



CRICKET



GRASSHOPPER



ANT



CUTWORM



EARWIG



SOWBUG

Use in and around ornamentals and vegetable gardens

Also kills armyworms, ants, crickets, centipedes, and millipedes

Keep out of reach of children

**CAUTION**

See side panel for additional precautionary statements

#### ACTIVE INGREDIENT:

Carbaryl  
(1-naphthyl N-methylcarbamate) . . . . 5%  
INERT INGREDIENTS . . . . . 95%

NET WEIGHT 2 LBS. (907 g)

Lilly Miller

GRASSHOPPER, EARWIG, CUTWORM & SOWBUG BAIT